

DATA-INSURE SERVER EDITION

Automated Data Protection and Simple Recovery for Microsoft Windows File Servers and Print Servers

Data-Insure SE (Server Edition) is an easy-to-use solution for automatic offsite data protection for Windows file servers and print servers.

Data Insure SE is eighth generation software, built on the world's most trusted backup and recovery platform used by a majority of the Fortune 1000 companies.

A COMPLETE BACKUP AND RECOVERY SOLUTION FOR WINDOWS SERVER 2003 AND 2000

Data-Insure SE (Server Edition) protects server data as easily and reliably as Data-Insure PC (PC Edition) backs up PCs. It features...

Offsite Protection – A copy of your data is sent offsite via the internet to our fully-managed data center facilities where it is safe, secure and available 24/7.

Scheduled or Manual Backups – Backups occur on a regular schedule that you customize, or you can back up whenever you like.

Point-And-Click Recovery – Benefit from rapid, reliable data recovery through a secure Internet connection, or via data on disk options.

Security – The backup solution is extremely secure with 128-bit AES encryption. Your data is encrypted the moment it leaves your server and stays that way until it returns.

Block-Level Backups – Block-level incremental backups save bandwidth and make sure your daily backups are fast by backing up only changed blocks (not the entire file every time).

Versioning – Restore from up to ten past versions of a file.

Open and Locked File Support – The software features open and locked file backup using Microsoft VSS technology.

Web Access – Retrieve files to any web-enabled PC.

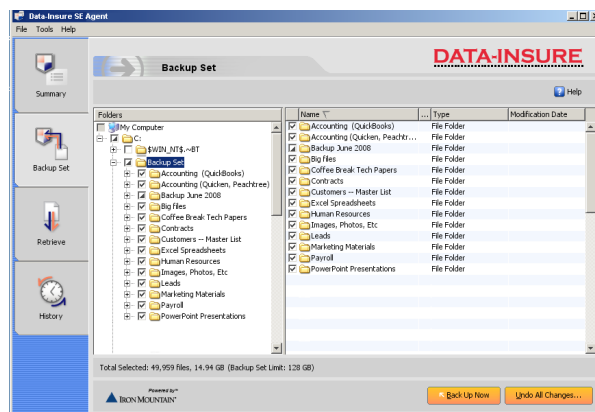


HOW IT WORKS

Data-Insure is based on the *software as a service* model which means no investment in hardware or software is required. After a simple software install, users can immediately begin backing up their important data offsite via the internet to our world-class data center facilities. The service is available as a monthly subscription service.

After installing the backup software, users can:

- select folders and files to backup
- set automatic and scheduled backups
- see a history of all backups
- configure options
- restore files and folders
- log in to the online account management portal
- download files to any internet-connected computer



Data-Insure screenshot

DATA-INSURE SERVER EDITION

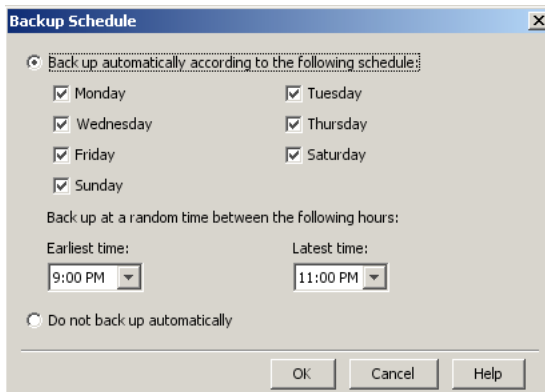
Step 1. Click on "Backup Set" tab

Step 2. Select the folders on the server you want to backup

Step 3. If you prefer, select specific files inside your folders for backup

Step 4. Click on the "Back Up Now" button and a copy of your data is compressed, encrypted and sent to our fully-managed offsite facilities

The screenshot shows the 'Data-Insure SE Agent' window. The 'Backup Set' tab is selected in the sidebar. The main window displays a file tree on the left and a file list on the right. The file list includes folders like 'Accounting (QuickBooks)', 'Backup June 2008', 'Big files', etc. A yellow callout box points to the file list with the text: 'This pane lets you select specific files to backup.' Another yellow callout box points to the file tree with the text: 'This pane shows all the files on your computer.' At the bottom, there is a 'Back Up Now' button and an 'Undo All Changes...' button. The status bar at the bottom indicates 'Total Selected: 49,959 Files, 14.94 GB (Backup Set Limit: 128 GB)'.



Automatic Backups

Backup Scheduler allows you to decide exactly when you want to back up your files down to the day and time.

To set your automatic backup schedule just go to **Tools > Backup Schedule** and the configuration box will appear so you can set your preferred backup days and times.