

DATA-INSURE PC EDITION

Automated Data Protection and Simple Recovery for Windows Desktops, Laptops and Workstations

Data-Insure PC Edition is an easy-to-use solution for automatic offsite protection for data on Windows computers (Vista, XP, Windows 2000 Professional).

Data-Insure PC is eighth generation software, built on the world's most trusted backup and recovery platform used by a majority of the Fortune 1000 companies.



A COMPLETE BACKUP AND RECOVERY SOLUTION FOR WINDOWS COMPUTERS

Data-Insure PC protects data as easily and reliably as Data-Insure SE (Server Edition) backs up Windows file and print servers. Data-Insure PC features...

Offsite Protection – A copy of your data is sent offsite via the internet to our fully-managed data center facilities where it is safe, secure and available 24/7.

Scheduled or Manual Backups – Backups occur on a regular schedule that you customize, or you can back up whenever you like.

Point-And-Click Recovery – Benefit from rapid, reliable data recovery through a secure Internet connection, or via data on disk options.

Security – 128-bit AES encryption and SSL transfer provide military-grade security. Data is encrypted the moment it leaves your computer and stays that way until it returns.

Block-Level Backups – Block-level incremental backups save bandwidth and make sure your daily backups are fast by backing up only changed blocks (not the entire file every time).

Versioning – Restore from up to ten past versions.

Open and Locked File Support – Backup open and locked files (no need to close applications).

Web Access – Retrieve files from any web-enabled PC.

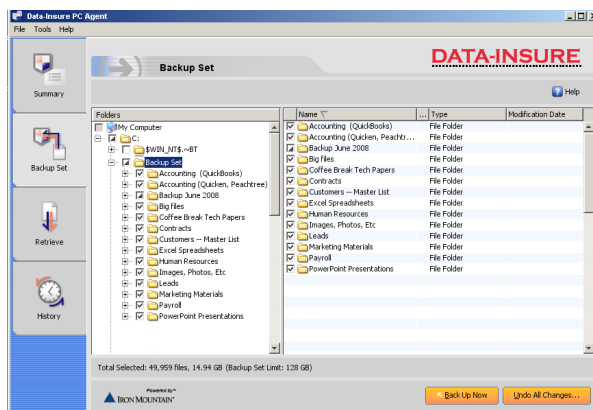
Email Backup – Backup Outlook .pst and Lotus Notes .nsf database files.

HOW IT WORKS

Data-Insure combines software and online storage in one easy solution. This makes it simple for you to back up your files to our professionally managed data centers so they are safe and secure. Data-Insure is based on the *software as a service* model which means no investment in hardware or software. The service is available as a monthly subscription.

After installing the Data-Insure software, users can:

- select folders and files to backup
- set a backup schedule or do manual backups
- see a history of all backups
- configure options
- restore files and folders
- log in to the online account management portal
- access files from any internet-connected PC



Data-Insure screenshot

DATA-INSURE PC EDITION

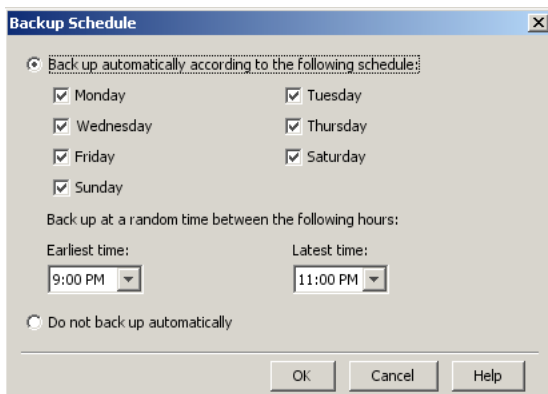
Step 1. Click on "Backup Set" tab

Step 2. Select the folders on your computer you want to backup

Step 3. If you prefer, select specific files inside your folders for backup

Step 4. Click on the "Back Up Now" button and a copy of your data is compressed, encrypted and sent to our fully-managed offsite facilities

Name	Type	Modification Date
Accounting (QuickBooks)	File Folder	
Accounting (QuickBooks, Peachtree)	File Folder	
Backup June 2008	File Folder	
Big files	File Folder	
Coffee Break Tech Papers	File Folder	
Contracts	File Folder	
Customers -- Master List	File Folder	
Excel Spreadsheets	File Folder	
Human Resources	File Folder	
Images, Photos, Etc	File Folder	
Leads	File Folder	
Marketing Materials	File Folder	
Payroll	File Folder	
PowerPoint Presentations	File Folder	



Automatic Backups

Backup Scheduler allows you to decide exactly when you want to back up your files down to the day and time.

To set your automatic backup schedule just go to **Tools > Backup Schedule** and the configuration box will appear so you can set your preferred backup days and times.